



Tokyo & more 2000-2019

Matthias Frey



Photos from Tokyo and surroundings, taken from 2000 to 2019.
The tour starts with temples and shrines and then moves clockwise around Yamanote & Sobu line with additional stops at spring festivals.

Yasukuni Jinja, March 2018



Meiji Jingu, October 2019

Ikegami Honmonji, March 2010
Ikegami Honmonji, March 2010
Ikegami Honmonji, March 2010
Meiji Jingu, March 2013



Shibuya, October 2019

Shibuya, September 2017



Shibuya, December 2018

Harajuku, September 2017



Higashi-Nakano, March 2018

Yasukuni Shrine, April 2009
Kappabashi, September 2017



Shinjuku, December 2008

Shinjuku, March 2018



Shinjuku, December 2018

Shinjuku, December 2018



Shinjuku, December 2018

Shinjuku, December 2018

Shinjuku, December 2018



Kudanshita, March 2018

Naka-Meguro, April 2017

Chidorigafuji, March 2018

Ookayama, March 2008

Nakameguro, March 2018



Nakameguro, April 2017
Chidorigafuji, April 2014
Chidorigafuji, April 2014

Nakameguro, March 2010



Okutama, October 2010

Rikugien, May 2019

Koyasan, June 2009
Koyasan, June 2009



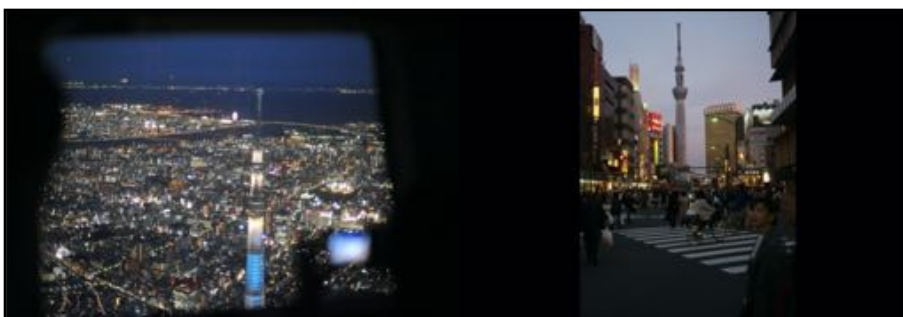
Korakuen, March 2018

Korakuen, January 2010



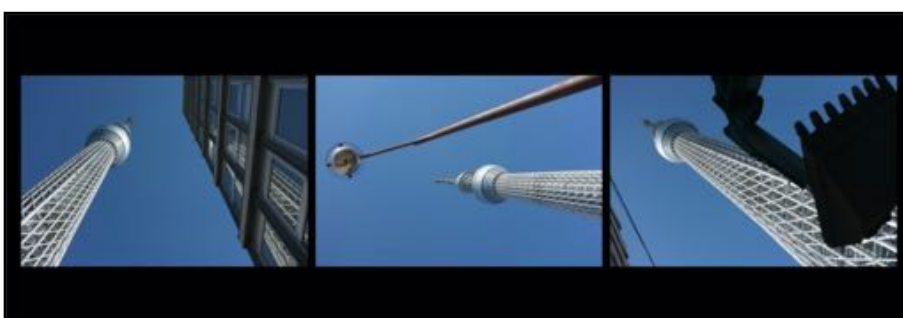
Asakusa, September 2017
Asakusa, December 2018

Asakusa, September 2017



Tokyo Sky Tree, August 2016

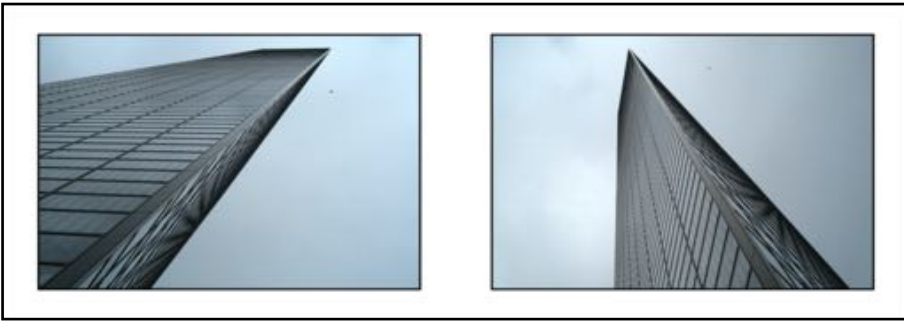
Asakusa, December 2018



Oshiage, January 2012

Oshiage, January 2012

Oshiage, January 2012



Shiodome, December 2018

Shiodome, December 2018



Shinbashi, December 2018

Tamachi, March 2018



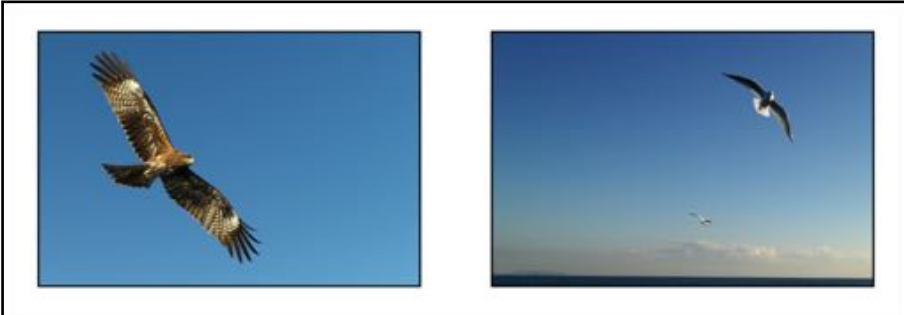
Jogashima, November 2016

Jogashima, November 2016

Jogashima, November 2016

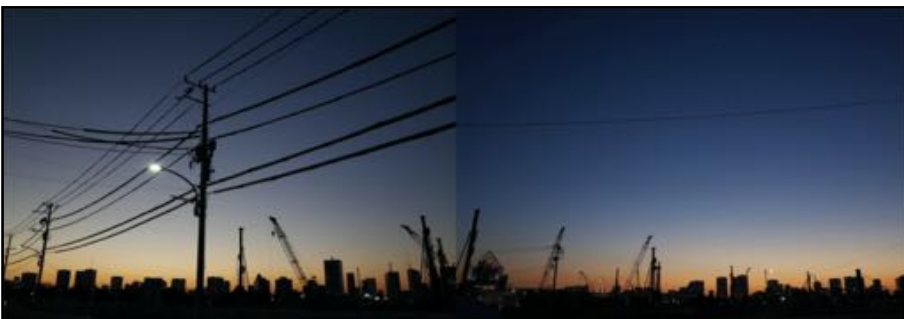
Jogashima, November 2016

(Miura Kaigan)



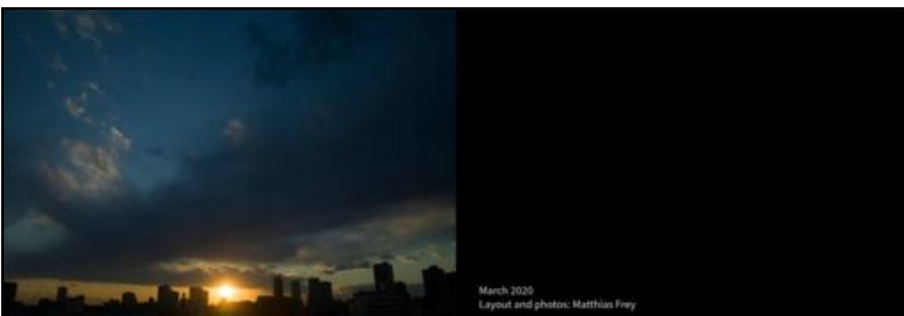
Jogashima, November 2016

Jogashima, November 2016



Toyosu, February 2017

Toyosu, February 2017



Shinagawa, April 2019